

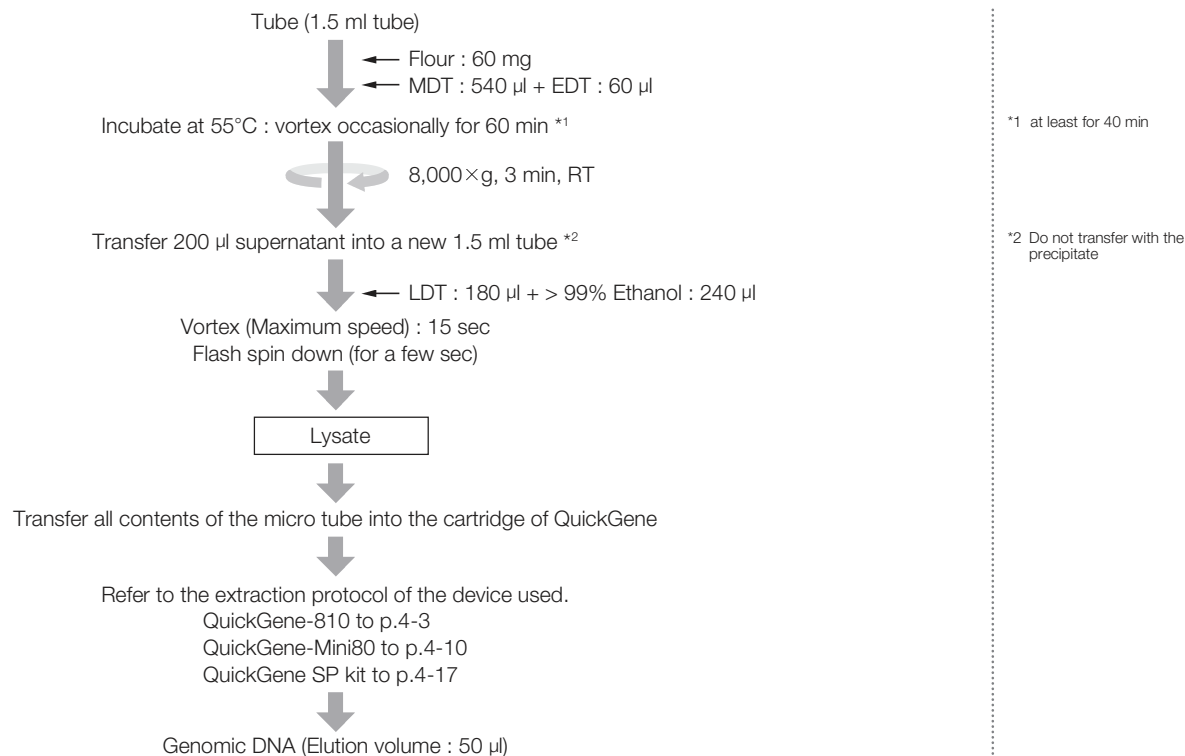
Chapter 3-IV

Genomic DNA Extraction from Food

DC-1

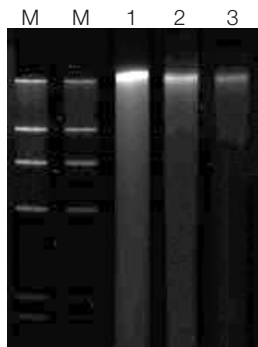
Genomic DNA Extraction from Flour

Protocol



Results

Electropherogram



M : λ -Hind III
 1 : Genomic DNA
 2 : Twofold dilution of Genomic DNA
 3 : Fourfold dilution of Genomic DNA

The yield of genomic DNA

Amount of flour	Yield(µg)
60 mg	0.3

Protein contamination : A260/280

No Data

Chaotropic salt contamination : A260/230

No Data

Other

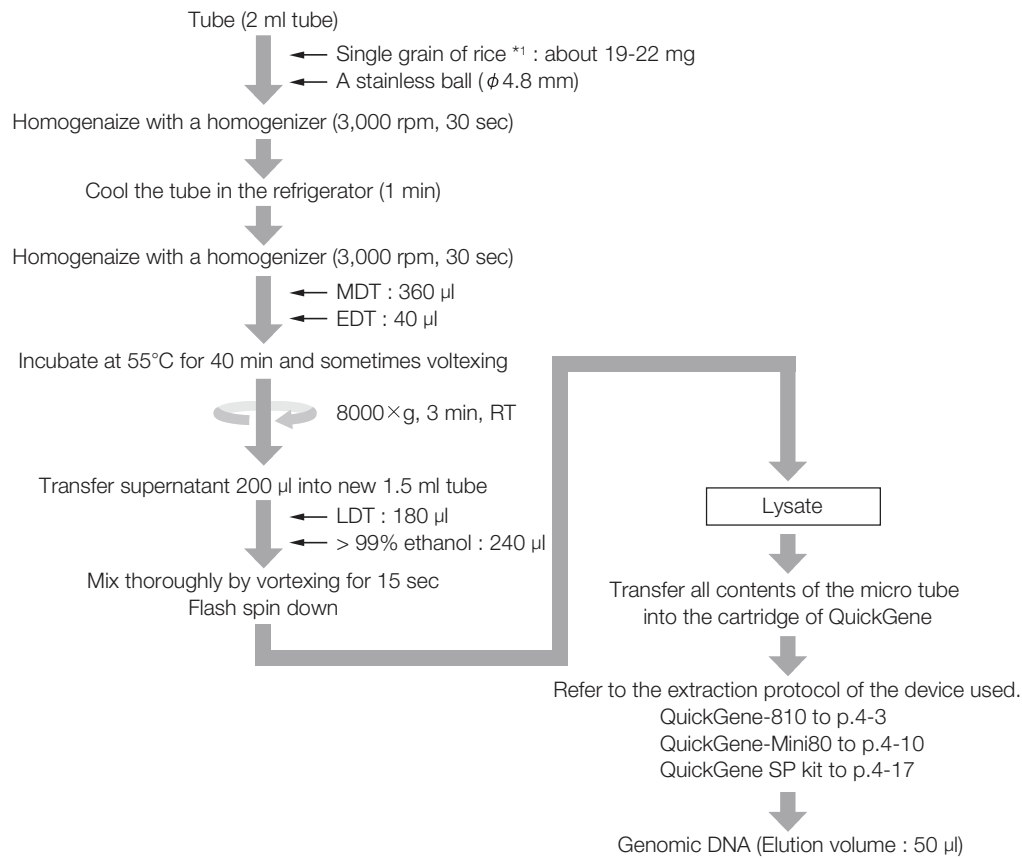
No Data

Common protocol is usable for the following

No Data

Genomic DNA Extraction from Rice

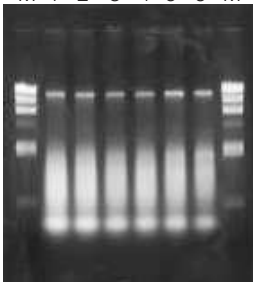
Protocol



Results

Electropherogram

M 1 2 3 4 5 6 M



M : λ -Hind III Fragment
 1 : musenmai (unwashed rice)
 2 : musenmai (unwashed rice)
 3 : clean rice
 4 : clean rice
 5 : brown rice
 6 : brown rice
 M : λ -Hin d III Fragment

The yield of genomic DNA

No Data

Protein contamination : A260/280

No Data

Chaotropic salt contamination : A260/230

No Data

Other

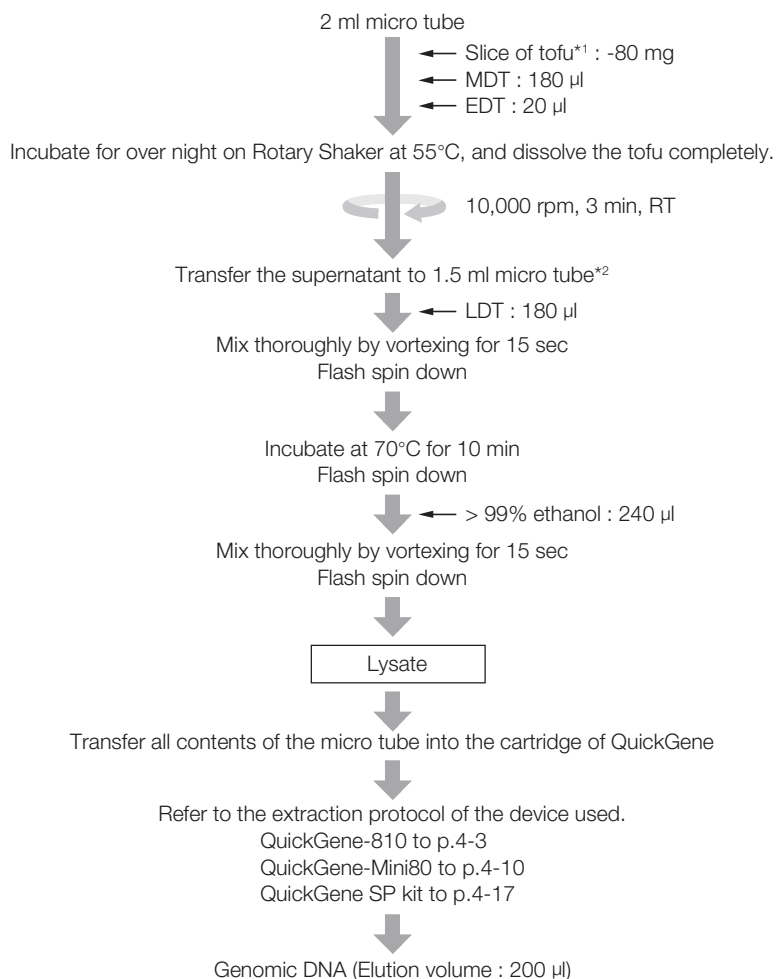
No Data

Common protocol is usable for the following

No Data

Genomic DNA Extraction from Tofu

Protocol

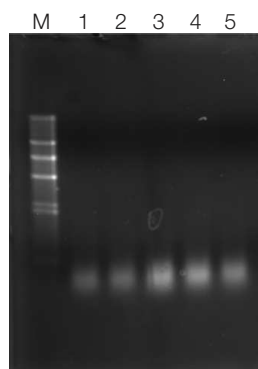


*1 Tofu, pinched with paper towel over night, is then drained.

*2 Oil content floating on supernatant is not.

Results

Electropherogram



M : marker
1 : Tofu 5 mg
2 : Tofu 10 mg
3 : Tofu 30 mg
4 : Tofu 50 mg
5 : Tofu 80 mg

■ The yield of genomic DNA

Amount of tofu	Yield(ng/μl)
5 mg	42.81
10 mg	104.85
30 mg	254.18
50 mg	498.0
80 mg	394.3

■ Protein contamination : A260/280

Amount of tofu	A260/280
5 mg	1.92
10 mg	1.87
30 mg	1.93
50 mg	2.07
80 mg	2.02

■ Chaotropic salt contamination : A260/230

Amount of tofu	A260/230
5 mg	1.29
10 mg	1.35
30 mg	1.98
50 mg	2.05
80 mg	1.93

■ Other

No Data

Common protocol is usable for the following

No Data



North American Distributor
AutoGen, Inc.
84 October Hill Road
Holliston, MA 01746 USA

tel: 508.429.5965
fax: 508.429.9765
email: info@autogen.com
web: autogen.com