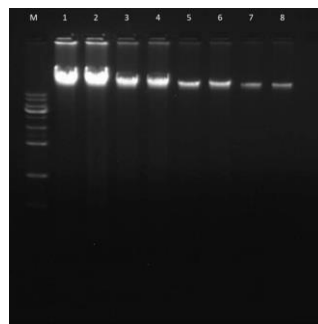
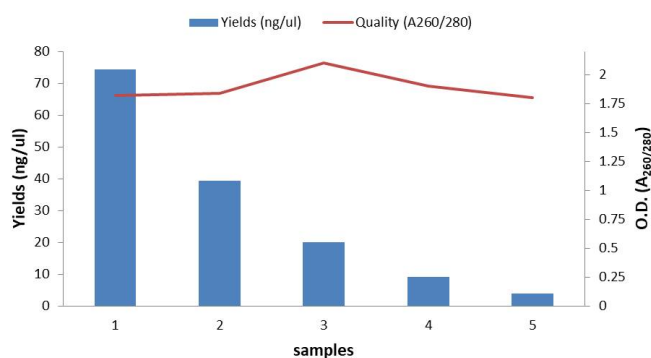


Technical Note – Bacterial

Automated Genomic DNA Isolation from Bacterial Samples

AutoGen offers different levels of automation to serve every laboratory's needs based on workflows and budget. Our XTRACT 16+ automated workflow along with the Genomic DNA Bacterial Kit are optimized for isolating genomic DNA from both Gram-positive and Gram-negative bacteria.

- Quick, consistent and reproducible results.
- Convenient pre-filled and sealed cartridges..
- Isolate DNA from both Gram-positive and Gram negative bacteria.
- Purified DNA to use in all downstream applications.



Analysis of isolated DNA from Gram negative bacterial E.coli purified on XTRACT 16+
Shown here are consistency in yield and reproducibility of bacteria genomic DNA extraction on the XTRACT 16+.

Lane M: 1 kb DNA ladder marker
Lane 1-5: Bacterial DNA extracted from 2-fold serial dilutions of E.coli DH5a cell suspension.

AutoGen XTRACT 16+

Total automated workflow for bacterial DNA extraction with XTRACT 16+.

Key Features

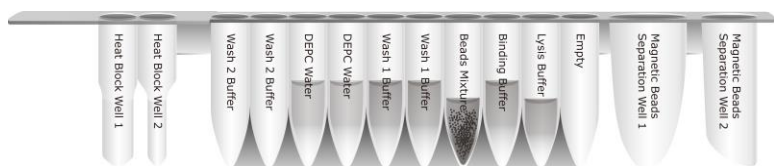
- Specimen volumes up to 10mL.
- Low-medium throughput, 1-16 samples / run
- Bar code reading / sample tracking
- LIMS compatibility
- Archival quality DNA



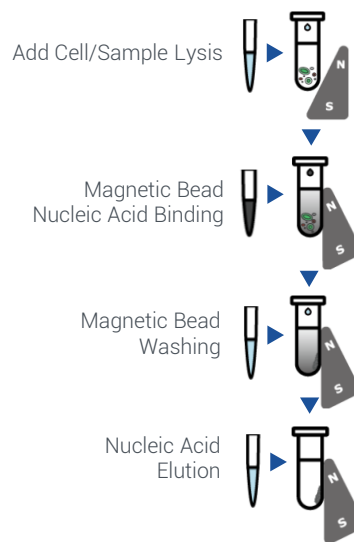
Technical Note - Bacterial

XTRACT 16+ Principle and Procedure

The XTRACT method uses a pre-filled cartridge. Following an offline lysis step, DNA will bind to the cellulose coated magnetic beads. After washing off the contaminants, the purified DNA is eluted by low salt elution buffer. Using magnetic-particle technology to purify genomic DNA from Gram-positive or Gram-negative bacteria, the purified genomic DNA can be used directly for all downstream applications.



XTRACT DNA Procedure



Ordering Information and Kit Performance

PRODUCT #	PRODUCT NAME	SAMPLE SIZE	PROCESSING TIME
XK502-96	XTRACT Genomic DNA Bacterial Kit	200µL	39 minutes

AutoGen's promise is to provide the most practical, economically effective solutions for your sample prep and automation extraction solution needs, and to do it with a level of service, support, and responsiveness that leads the industry.