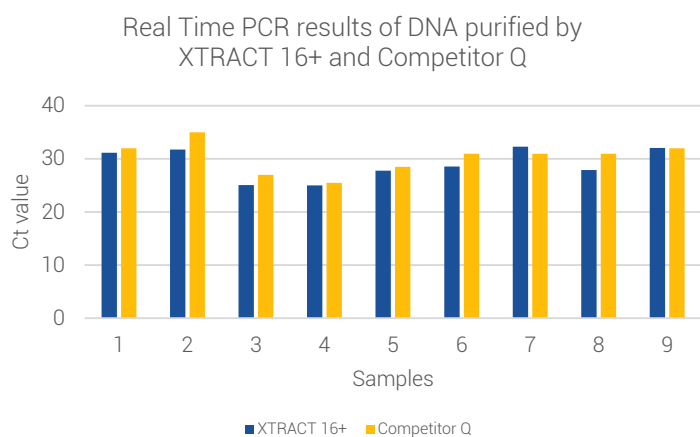


# Technical Note – FFPE Tissue

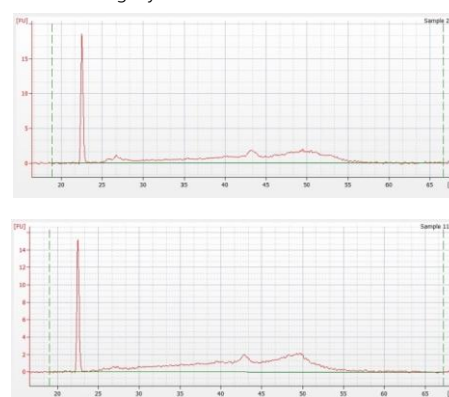
## Automated Genomic DNA or RNA Isolation from FFPE Tissue Samples

AutoGen offers different levels of automation to serve every laboratory's needs based on workflows and budget. Our XTRACT 16+ automated workflow along with the Genomic DNA FFPE One-Step Kit or Total RNA FFPE One-Step Kit are optimized for isolating total DNA or RNA from formalin-fixed paraffin embedded (FFPE) tissue samples. Both kits feature a one-step heating method to melt paraffin without harmful reagents involved such as xylene or other organic solvents, and lyse tissues at the same time.

- Quick, consistent and reproducible results.
- Convenient pre-filled and sealed cartridges.
- Minimal manual pipetting, complete automatic procedure from FFPE tissue to cell lysis to elution.
- Automated isolation of DNA or RNA from FFPE tissue without requiring a pre-treatment deparaffinization step, saving 75% hands-on time.
- Purified DNA or RNA to use in all downstream applications.



RNA Integrity from FFPE Tissue



## AutoGen XTRACT 16+

Total automated workflow for FFPE DNA or RNA extraction with XTRACT 16+.

### Key Features

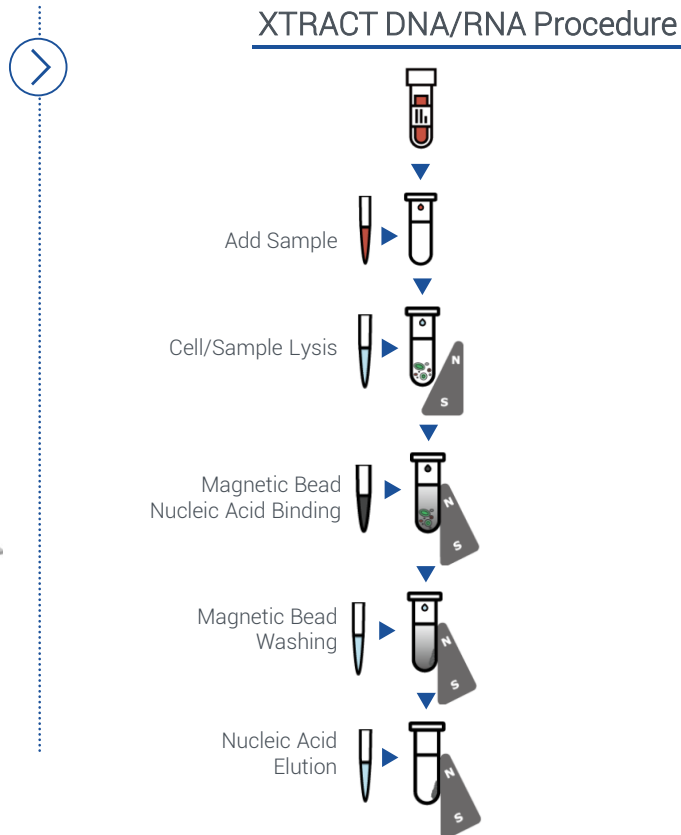
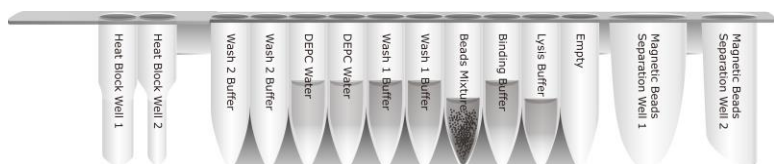
- Surface area of up to 300mm<sup>2</sup> and up to 5µm thick
- Low-medium throughput, 1-16 samples / run
- Bar code reading / sample tracking
- LIMS compatibility
- Archival quality DNA or RNA



# Technical Note - FFPE Tissue

## XTRACT 16+ Principle and Procedure

The XTRACT method uses a pre-filled cartridge containing proteinase K and chaotropic salt to lyse cells and degrade protein. DNA or RNA will bind to the cellulose coated magnetic beads. After washing off the contaminants, the purified DNA or RNA is eluted by low salt elution buffer. Using magnetic-particle technology to purify genomic DNA or RNA from FFPE tissue, the purified DNA or RNA can be used directly for all downstream applications.



## Ordering Information and Kit Performance

PRODUCT #	PRODUCT NAME	SAMPLE SIZE	PROCESSING TIME
XK405-72	XTRACT Genomic DNA FFPE One-Step Kit	Up to 300 mm <sup>2</sup> Up to 5µm thick	162 minutes
XK605-72	XTRACT Total RNA FFPE One-Step Kit	Up to 300 mm <sup>2</sup> Up to 5µm thick	158 minutes

*AutoGen's promise is to provide the most practical, economically effective solutions for your sample prep and automation extraction solution needs, and to do it with a level of service, support, and responsiveness that leads the industry.*