



# XTRACT 16+

## A MIGHTY MACHINE

*Isolate DNA and RNA from almost anything with AutoGen's latest automated workflow – the XTRACT 16+*



### SIMPLE, STREAMLINED AND FAST

The XTRACT 16+ provides fast and high-yield nucleic acid purification from virtually ALL molecular diagnostic, biological, clinical and forensic sample types. With 100% automated FFPE, DNA and RNA, this is the one workflow that provides streamlined walk-away sample processing and delivers contaminant-free, extracted DNA and RNA in high concentrations.

#### **100% AUTOMATED FFPE, DNA AND RNA**

Liquid Biopsy/Circulating cell-free  
DNA/ctDNA/cfDNA

### LAB BENEFITS WITH THE XTRACT 16+

- + Over 20 Different Applications**  
A broad variety of sample types from blood, to FFPE, tissue, cells, bacterial, viral and more
- + Up To 16 Samples Per Run**  
Isolated simultaneously at your fingertip
- + LIMS Connectivity**  
Full traceability of samples & kits
- + Real-Time Monitoring**  
The XTRACT 16+ HMI can be accessed with Wi-Fi via your smartphone/tablet through an app; Android and iOS compatible to see real-time information about run processing status.
- + Operate With Ease!**  
The XTRACT 16+ kits have everything you need including pre-filled cartridges and specialized disposable tips and tubes. The user-friendly interface guarantees easy operation.

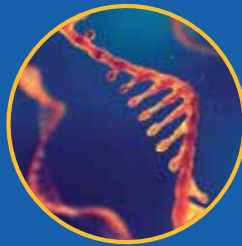
## XTRACT 16+ WORKFLOWS

Streamlined workflows from primary sample to ready to use nucleic acids. The XTRACT 16+ provides automated workflows for labs of all size and budgets and handles up to 16 samples per run. With over 20 applications immediately available this versatile system offers solutions at a low capital investment and operating cost. Whether you need to process a small or large batch of samples, the XTRACT 16+ has a proven track record of saving our customers time, labor, and money.

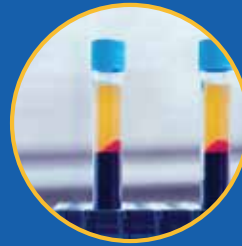
XTRACT 16+ Workflows include:



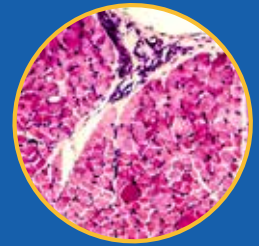
FFPE



RNA



LIQUID BIOPSY



TISSUE



BLOOD



STOOL



SALIVA

And many more. To learn more about the XTRACT 16+ and how your lab will benefit, contact Rob Osborn at [508.395.8161](tel:508.395.8161) or [rosborn@AutoGen.com](mailto:rosborn@AutoGen.com). For more information about AutoGen, please visit [www.AutoGen.com](http://www.AutoGen.com).

<b>Power supply:</b> Voltage: 29:29AC 100-240V; Frequency 50/60 Hz	<b>Weight:</b> 30:3070kg/154.35 lbs	<b>Dimensions:</b> 600 W x 600 D x 600 H (mm); 23.62" W x 23.62" D x 23.62" H
--------------------------------------------------------------------------	----------------------------------------	-------------------------------------------------------------------------------------

## ABOUT AUTOGEN

AutoGen is a leading provider of automated nucleic acid extraction workflows that allows lab professionals to produce premier quality and value-added extraction results. Our workflows provide solutions that are the best fit for our customers' laboratory needs and budget, and our customers include biorepositories, contract research organizations, academic research laboratories, pharmaceutical companies, clinical diagnostic laboratories, and government institutions all over the world. We strive to provide quality instrumentation and chemistries, as well as dedicated technical support – all with a level of post-sale service that is truly unmatched. Visit [www.AutoGen.com](http://www.AutoGen.com) to learn more.